

KATASTAR MALIH HIDROELEKTRANA

KATASTARSKI LIST

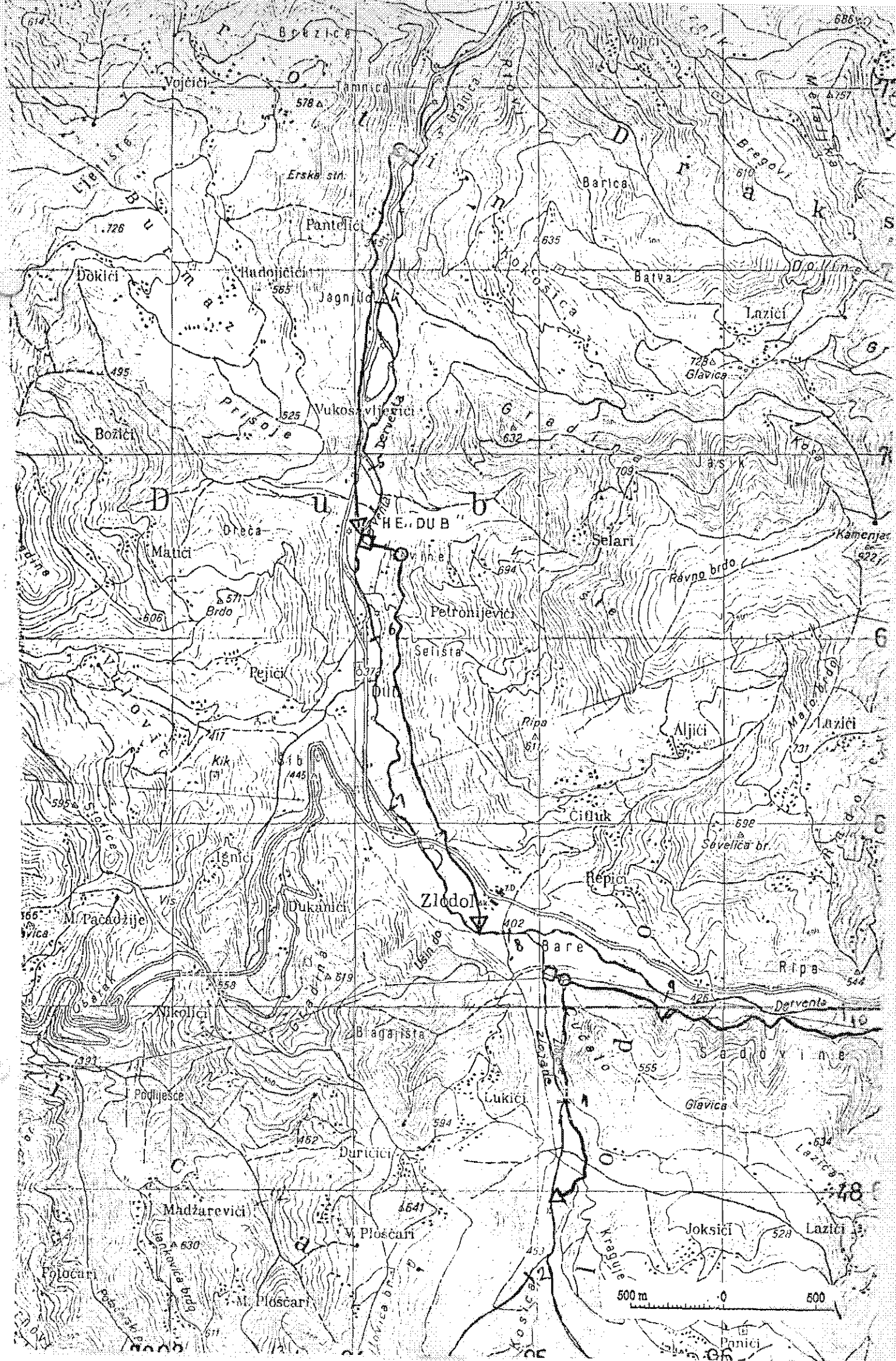
Broj 697

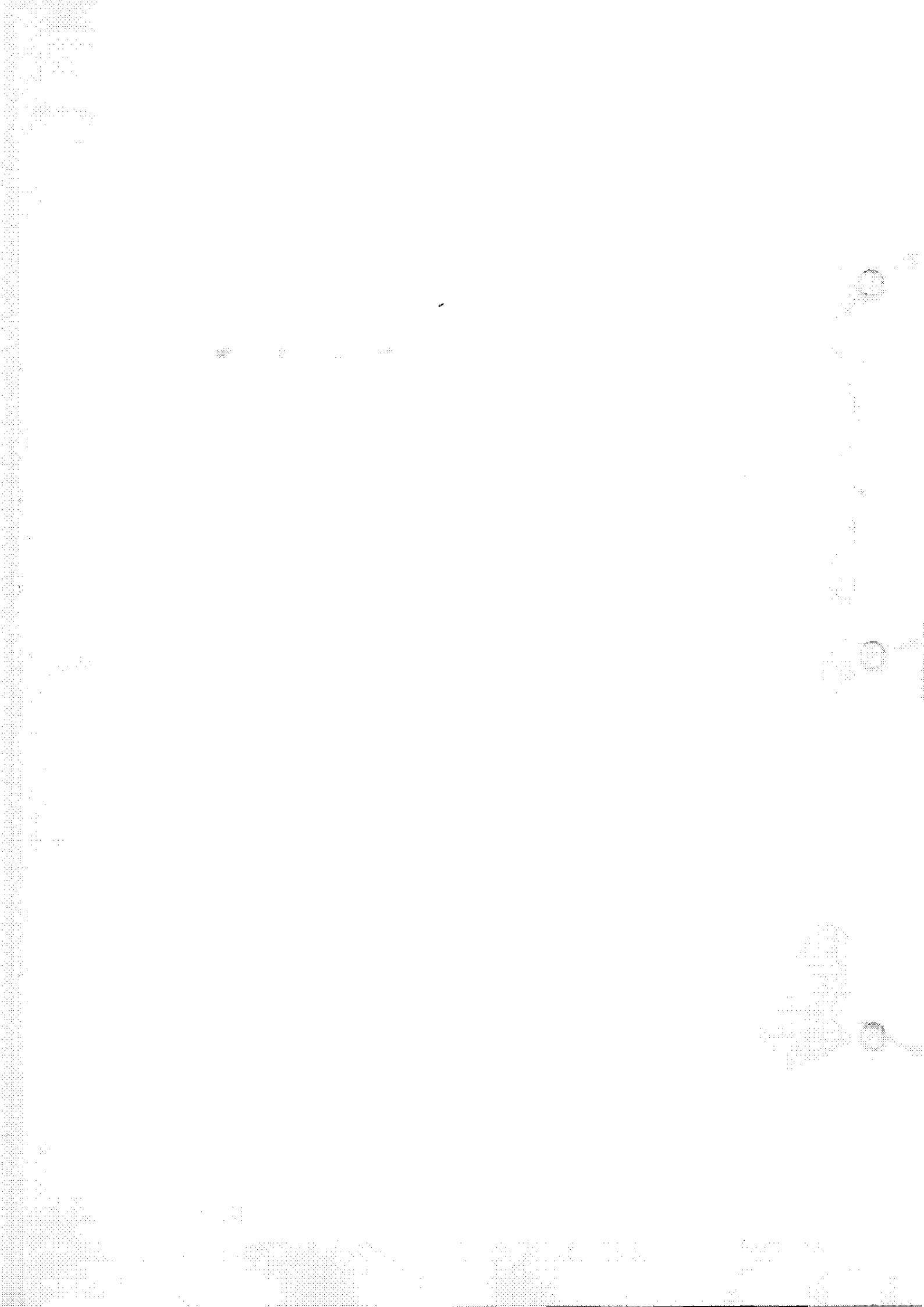
SPISAK PRILOGA KATASTARSKOM LISTU

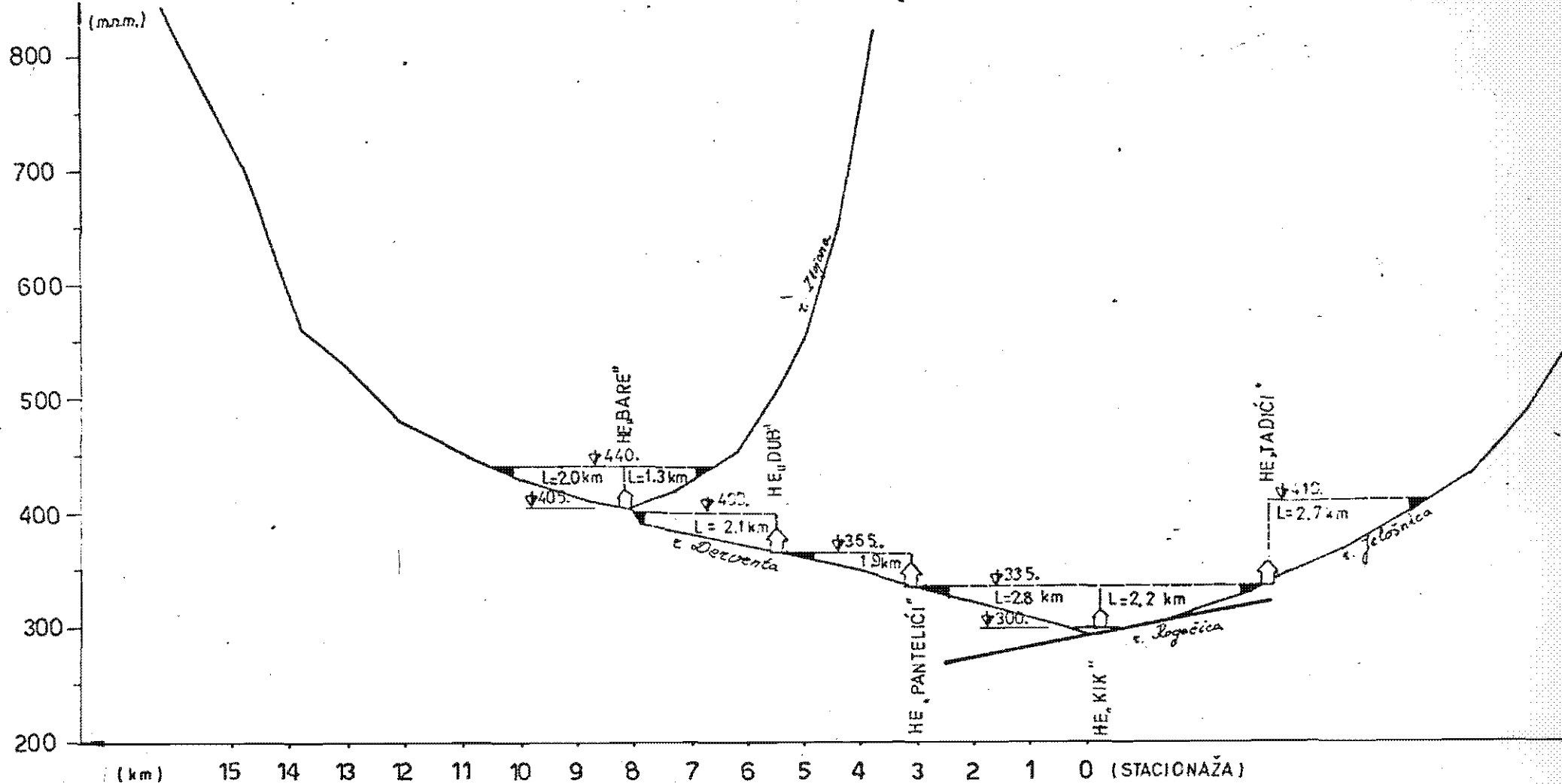
1. Situacija

2. Podužni profil

| Redni broj | Opis objekta | Ukupna površina | Površina podignog dela | Ukupna vrednost | Vrednost podignog dela |
|------------|------------------|-----------------|------------------------|-----------------|------------------------|
| 1 | Stambeni objekat | 120 | 80 | 12000 | 8000 |
| 2 | Stambeni objekat | 150 | 100 | 15000 | 10000 |
| 3 | Stambeni objekat | 180 | 120 | 18000 | 12000 |
| 4 | Stambeni objekat | 200 | 140 | 20000 | 14000 |
| 5 | Stambeni objekat | 220 | 160 | 22000 | 16000 |
| 6 | Stambeni objekat | 250 | 180 | 25000 | 18000 |
| 7 | Stambeni objekat | 280 | 200 | 28000 | 20000 |
| 8 | Stambeni objekat | 300 | 220 | 30000 | 22000 |
| 9 | Stambeni objekat | 320 | 240 | 32000 | 24000 |
| 10 | Stambeni objekat | 350 | 260 | 35000 | 26000 |
| 11 | Stambeni objekat | 380 | 280 | 38000 | 28000 |
| 12 | Stambeni objekat | 400 | 300 | 40000 | 30000 |
| 13 | Stambeni objekat | 420 | 320 | 42000 | 32000 |
| 14 | Stambeni objekat | 450 | 340 | 45000 | 34000 |
| 15 | Stambeni objekat | 480 | 360 | 48000 | 36000 |
| 16 | Stambeni objekat | 500 | 380 | 50000 | 38000 |
| 17 | Stambeni objekat | 520 | 400 | 52000 | 40000 |
| 18 | Stambeni objekat | 550 | 420 | 55000 | 42000 |
| 19 | Stambeni objekat | 580 | 440 | 58000 | 44000 |
| 20 | Stambeni objekat | 600 | 460 | 60000 | 46000 |
| 21 | Stambeni objekat | 620 | 480 | 62000 | 48000 |
| 22 | Stambeni objekat | 650 | 500 | 65000 | 50000 |
| 23 | Stambeni objekat | 680 | 520 | 68000 | 52000 |
| 24 | Stambeni objekat | 700 | 540 | 70000 | 54000 |
| 25 | Stambeni objekat | 720 | 560 | 72000 | 56000 |
| 26 | Stambeni objekat | 750 | 580 | 75000 | 58000 |
| 27 | Stambeni objekat | 780 | 600 | 78000 | 60000 |
| 28 | Stambeni objekat | 800 | 620 | 80000 | 62000 |
| 29 | Stambeni objekat | 820 | 640 | 82000 | 64000 |
| 30 | Stambeni objekat | 850 | 660 | 85000 | 66000 |
| 31 | Stambeni objekat | 880 | 680 | 88000 | 68000 |
| 32 | Stambeni objekat | 900 | 700 | 90000 | 70000 |
| 33 | Stambeni objekat | 920 | 720 | 92000 | 72000 |
| 34 | Stambeni objekat | 950 | 740 | 95000 | 74000 |
| 35 | Stambeni objekat | 980 | 760 | 98000 | 76000 |
| 36 | Stambeni objekat | 1000 | 780 | 100000 | 78000 |
| 37 | Stambeni objekat | 1020 | 800 | 102000 | 80000 |
| 38 | Stambeni objekat | 1050 | 820 | 105000 | 82000 |
| 39 | Stambeni objekat | 1080 | 840 | 108000 | 84000 |
| 40 | Stambeni objekat | 1100 | 860 | 110000 | 86000 |
| 41 | Stambeni objekat | 1120 | 880 | 112000 | 88000 |
| 42 | Stambeni objekat | 1150 | 900 | 115000 | 90000 |
| 43 | Stambeni objekat | 1180 | 920 | 118000 | 92000 |
| 44 | Stambeni objekat | 1200 | 940 | 120000 | 94000 |
| 45 | Stambeni objekat | 1220 | 960 | 122000 | 96000 |
| 46 | Stambeni objekat | 1250 | 980 | 125000 | 98000 |
| 47 | Stambeni objekat | 1280 | 1000 | 128000 | 100000 |
| 48 | Stambeni objekat | 1300 | 1020 | 130000 | 102000 |
| 49 | Stambeni objekat | 1320 | 1040 | 132000 | 104000 |
| 50 | Stambeni objekat | 1350 | 1060 | 135000 | 106000 |
| 51 | Stambeni objekat | 1380 | 1080 | 138000 | 108000 |
| 52 | Stambeni objekat | 1400 | 1100 | 140000 | 110000 |
| 53 | Stambeni objekat | 1420 | 1120 | 142000 | 112000 |
| 54 | Stambeni objekat | 1450 | 1140 | 145000 | 114000 |
| 55 | Stambeni objekat | 1480 | 1160 | 148000 | 116000 |
| 56 | Stambeni objekat | 1500 | 1180 | 150000 | 118000 |
| 57 | Stambeni objekat | 1520 | 1200 | 152000 | 120000 |
| 58 | Stambeni objekat | 1550 | 1220 | 155000 | 122000 |
| 59 | Stambeni objekat | 1580 | 1240 | 158000 | 124000 |
| 60 | Stambeni objekat | 1600 | 1260 | 160000 | 126000 |
| 61 | Stambeni objekat | 1620 | 1280 | 162000 | 128000 |
| 62 | Stambeni objekat | 1650 | 1300 | 165000 | 130000 |
| 63 | Stambeni objekat | 1680 | 1320 | 168000 | 132000 |
| 64 | Stambeni objekat | 1700 | 1340 | 170000 | 134000 |
| 65 | Stambeni objekat | 1720 | 1360 | 172000 | 136000 |
| 66 | Stambeni objekat | 1750 | 1380 | 175000 | 138000 |
| 67 | Stambeni objekat | 1780 | 1400 | 178000 | 140000 |
| 68 | Stambeni objekat | 1800 | 1420 | 180000 | 142000 |
| 69 | Stambeni objekat | 1820 | 1440 | 182000 | 144000 |
| 70 | Stambeni objekat | 1850 | 1460 | 185000 | 146000 |
| 71 | Stambeni objekat | 1880 | 1480 | 188000 | 148000 |
| 72 | Stambeni objekat | 1900 | 1500 | 190000 | 150000 |
| 73 | Stambeni objekat | 1920 | 1520 | 192000 | 152000 |
| 74 | Stambeni objekat | 1950 | 1540 | 195000 | 154000 |
| 75 | Stambeni objekat | 1980 | 1560 | 198000 | 156000 |
| 76 | Stambeni objekat | 2000 | 1580 | 200000 | 158000 |
| 77 | Stambeni objekat | 2020 | 1600 | 202000 | 160000 |
| 78 | Stambeni objekat | 2050 | 1620 | 205000 | 162000 |
| 79 | Stambeni objekat | 2080 | 1640 | 208000 | 164000 |
| 80 | Stambeni objekat | 2100 | 1660 | 210000 | 166000 |
| 81 | Stambeni objekat | 2120 | 1680 | 212000 | 168000 |
| 82 | Stambeni objekat | 2150 | 1700 | 215000 | 170000 |
| 83 | Stambeni objekat | 2180 | 1720 | 218000 | 172000 |
| 84 | Stambeni objekat | 2200 | 1740 | 220000 | 174000 |
| 85 | Stambeni objekat | 2220 | 1760 | 222000 | 176000 |
| 86 | Stambeni objekat | 2250 | 1780 | 225000 | 178000 |
| 87 | Stambeni objekat | 2280 | 1800 | 228000 | 180000 |
| 88 | Stambeni objekat | 2300 | 1820 | 230000 | 182000 |
| 89 | Stambeni objekat | 2320 | 1840 | 232000 | 184000 |
| 90 | Stambeni objekat | 2350 | 1860 | 235000 | 186000 |
| 91 | Stambeni objekat | 2380 | 1880 | 238000 | 188000 |
| 92 | Stambeni objekat | 2400 | 1900 | 240000 | 190000 |
| 93 | Stambeni objekat | 2420 | 1920 | 242000 | 192000 |
| 94 | Stambeni objekat | 2450 | 1940 | 245000 | 194000 |
| 95 | Stambeni objekat | 2480 | 1960 | 248000 | 196000 |
| 96 | Stambeni objekat | 2500 | 1980 | 250000 | 198000 |
| 97 | Stambeni objekat | 2520 | 2000 | 252000 | 200000 |
| 98 | Stambeni objekat | 2550 | 2020 | 255000 | 202000 |
| 99 | Stambeni objekat | 2580 | 2040 | 258000 | 204000 |
| 100 | Stambeni objekat | 2600 | 2060 | 260000 | 206000 |







VODOTOK: R. ROGAČICA SA PRITOKAMA
 PODUŽNI PROFIL SA PREDLOŽENIM REŠENJIMA

$$R=1: \frac{5000}{100000}$$

